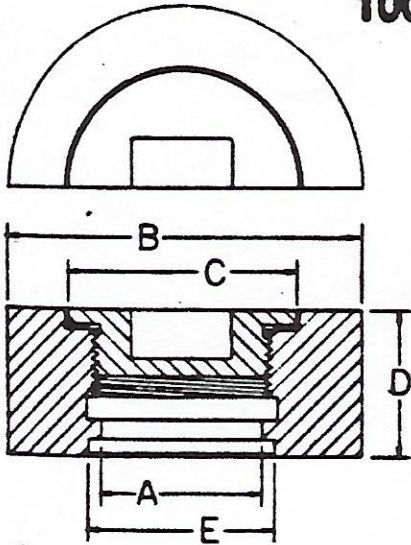


## SOUNDING TUBE DECK CONNECTIONS

Socket weld shown. If butt weld is required, please specify. Steel "T" wrenches are available.

### 1009-M Series

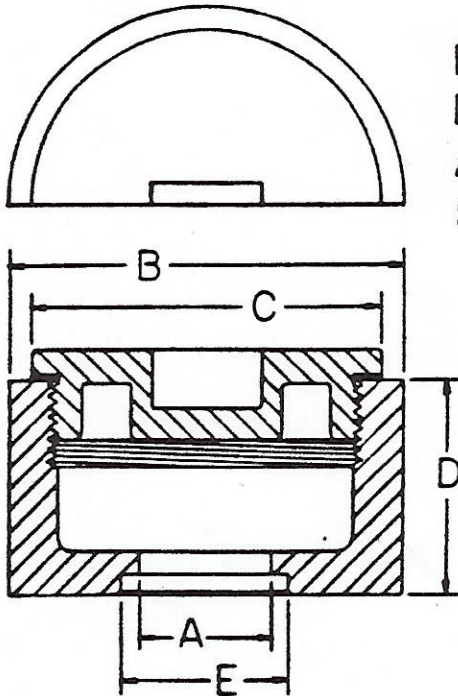


|        |                 |
|--------|-----------------|
| Body   | Stainless Steel |
| Plug   | Bronze          |
| Gasket | Blueguard 3000  |

#### Dimensions--Inches

| Size  | A    | B     | C       | D     | E    |
|-------|------|-------|---------|-------|------|
| 1-1/2 | 1.61 | 3-5/8 | 2-5/16  | 1-1/2 | 1.92 |
| 1-1/2 | 1.61 | 3-3/4 | 2-5/8   | 1-1/2 | 1.92 |
| 2     | 2.07 | 3-3/4 | 2-5/8   | 1-1/2 | 2.41 |
| 2     | 2.07 | 4-1/4 | 2-15/16 | 1-1/2 | 2.41 |
| 2-1/2 | 2.47 | 4-3/4 | 3-7/16  | 1-1/2 | 2.91 |
| 3     | 3.07 | 4-3/4 | 3-7/16  | 1-1/2 | 3.54 |
| 3     | 3.07 | 5-1/4 | 3-15/16 | 1-1/2 | 3.54 |
| 4     | 4.03 | 6-1/4 | 4-15/16 | 1-1/2 | 4.56 |
| 4     | 4.03 | 6-1/2 | 4-15/16 | 1-1/2 | 4.56 |

### 1009-L Series



Based on Buships  
Dwg. 810-1385848 Types  
A & B, and on Buships Dwg.  
S-4823-860220, Types C & D

|        |               |
|--------|---------------|
| Body   | Steel         |
| Plug   | Bronze        |
| Gasket | Anchorite 443 |

| Size  | A     | B | C     | D    | E |
|-------|-------|---|-------|------|---|
| 1-1/2 | 4-1/2 | 4 | 2-1/2 | 1.92 |   |
| 2     | 4-1/2 | 4 | 2-1/2 | 2.41 |   |
| 2-1/2 | 4-1/2 | 4 | 2-1/2 | 2.91 |   |



**Kings Point Machinery, Inc.**

9936 GOULD STREET  
OAKLAND, CA 94603

Phone: (510) 638-2712

**WE STOCK!**

Fax: (510) 638-3339 **Call us or fax your inquiry.**